

DuPont Controlled Environments

GARMENT AND PRODUCT CATALOG



The miracles of science™

WHY DUPONT CONTROLLED ENVIRONMENTS?

BECAUSE you want to do everything you can to improve productivity and reduce risk in your controlled environment.

At DuPont, we understand the cleanroom environment and continue to provide innovation and new offerings that can help ensure your controlled environment is as clean and efficient as possible. That means solutions to help you reduce the risk of contaminants in your operations—contaminants that can damage your final product quality, introduce the risk of non-compliance into your operations, and reduce your productivity.

With the DuPont Controlled Environments offering, you get the advantage of a wide range of proven, science-based solutions that help ensure superior protection for your business-critical systems, equipment, production process and personnel.

If your industry standards call for sterility and/or cleanliness in pharmaceutical, biotechnology, electronics or medical device environments, our limited-use apparel lines are designed to fit those needs.

DuPont offers apparel for environments where sterility and cleanliness are critical. DuPont products stand for high quality. Every garment is new, clean and fresh, so you can have peace of mind and confidence when using it.

If you have any questions, you can contact a DuPont Controlled Environments Specialist by calling 1.800.931.3456 (Monday through Friday, 8:30 a.m. to 5:30 p.m., Eastern Standard Time). We are more than happy to help you with your cleanroom apparel evaluation and discuss a variety of contamination control issues. You can also visit our web site at www.ControlledEnvironments.DuPont.com.

DUPONT SERVICE COMMITMENT

DuPont is committed to providing service-level excellence to all of our customers. This commitment includes a renewed focus on customer service, on-time delivery, sales/technical support and immediate access to product information.

Be advised that certain garments contained in this catalog description are subject to U.S. Export Control laws. Purchasing these garments subjects your company to those laws for export. For more information, contact us at 1.800.931.3456.

Contents

HOW TO INTERPRET PRODUCT PART NUMBERS	4
GARMENT PROCESSING & PACKAGING OPTIONS	5
HOW TO SELECT THE RIGHT GARMENTS	6
Coveralls—without hood	6
Coveralls—hooded	6
Hoods & bouffants	6
Shoe & boot covers	7
Sleeves & cuff tape	7
Frocks & lab coats	8
Aprons, gowns & smocks	8
Masks & face veils	8
GARMENTS AND PRODUCTS	
DuPont™ Tyvek® IsoClean®	9
DuPont™ Suprel™ LS	12
DuPont™ ProClean®	13
DuPont™ Tyvek® Micro-Clean® 2-1-2	14
DuPont™ SureStep™/ DuPont™ Dura-Trac™	14
DuPont™ Sierra™	15
General-purpose products	16
DuPont™ Sontara® wipes	17
GOWN RECOMMENDATIONS	18
SIZING CHART	19
STERILE PACKAGING PROCESS	19
STATEMENTS AND WARNINGS	20



How to interpret product part numbers

IC253BWHLG0025CS

Our “smart” part numbers are not just a random collection of characters. Each component of the 16-character DuPont part number has meaning. When combined, these components provide a wealth of important product information, as shown here.

IC	253	B	WH	LG	0025	CS
<p>Fabric type The first two characters are the fabric description.</p> <p>Abbreviations IC = IsoClean® SR = Suprel™ LS PC = ProClean® CC = Tyvek® Micro-Clean® 2-1-2 PE = SureStep™ DT = Dura-Trac™ PP = Polypropylene ML = Sierra™ Mask QC = Tychem® QC DE = Hydroentangled Polyester & Cellulose TY = Tyvek® 99 = Accessory</p>	<p>Garment design DuPont offers a wide array of garment styles—from hoods to frocks and coveralls. Each garment style has a unique three-digit code.</p>	<p>Seam type The final character in the base number denotes the seam construction of the garment.</p> <p>Abbreviations B = bound S = serged F = fell O = no seam</p>	<p>Color Several DuPont fabrics are available in color options; refer to catalog descriptions for details.</p> <p>Abbreviations WH = white BU = blue YL = yellow</p>	<p>Size Many DuPont garments are available in a range of sizes; refer to catalog descriptions for details.</p> <p>Abbreviations SM = small MD = medium LG = large XL = extra large 2X = 2 extra large 3X = 3 extra large 4X = 4 extra large 5X = 5 extra large OO = universal sizing</p>	<p>Case count Provides the number of garments per case; refer to catalog descriptions for details.</p>	<p>Options For example, OS designates sterilized and PI designates individually packaged. Not all option codes are available for all products; refer to catalog descriptions for details.</p> <p>Abbreviations CS = Clean & Sterile OS = Sterile OC = Clean-Processed PI = Individually Packaged OB = Bulk OO = Bulk BB = 50/box BH = 50/bag CT = Conductive Strip</p>

Garment processing & packaging options

STERILE

Clean-processed and sterile (option code CS)

Garments are specially processed to minimize particle shedding, then folded for aseptic donning and individually packaged in an ISO Class 4 cleanroom. The case quantity is packaged in a cardboard case with two polyethylene liners. Sterility is achieved by gamma irradiation. Irradiation dosage is validated in accordance with ISO 11137 for a Sterility Assurance Level (SAL) of 10⁻⁶.

Sterile (option code OS)

Garments are folded for aseptic donning and individually packaged. The case quantity is packaged in a cardboard case with two polyethylene liners. Some sterile items are folded and individually packaged in an ISO Class 5 cleanroom (see garment data sheet). Sterility is achieved by gamma irradiation. Irradiation dosage is validated in accordance with ISO 11137 for a Sterility Assurance Level (SAL) of 10⁻⁶.



Opaque sterile pouch packaging

NON-STERILE

Clean-processed (option code OC)

Garments are specially processed to minimize particle shedding and individually packaged in an ISO Class 4 cleanroom. The case quantity is packaged in a cardboard case with two polyethylene liners.

Individually packaged (option code PI)

Garments are individually packaged in an ISO Class 5 cleanroom. The case quantity is packaged in a cardboard case with two polyethylene liners.

Bulk (option code OB or OO)

Case quantities are packed in a cardboard case with two polyethylene liners.

Note: Individual packaging for shoe and boot covers indicates that each pair has its own sealed bag. Masks and cuff tapes may have subgroupings of individually packaged items within the case.

How to select the right garments

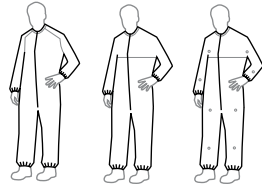
THE DUPONT CONTROLLED ENVIRONMENTS GARMENT PORTFOLIO

To help you select the right garments for your controlled environment, please select garment type, sterile or non-sterile, then select your preference for either clean-processed, bulk or individually packaged.

COVERALLS—WITHOUT HOOD

STERILE

clean

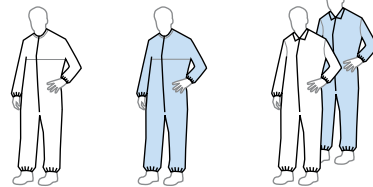


Tyvek®
IsoClean®
IC182
p.9

Tyvek®
IsoClean®
IC253
p.9

Tyvek®
IsoClean®
IC254
p.9

individual packages



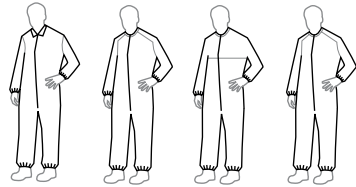
Tyvek®
IsoClean®
IC253
p.9

Tyvek®
Micro-Clean® 2-1-2
CC252
p.14

Suprel® LS
SR181
p.12

NON-STERILE

clean



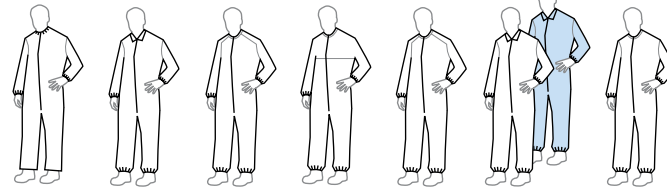
Tyvek®
IsoClean®
IC181
p.9

Tyvek®
IsoClean®
IC182
p.9

Tyvek®
IsoClean®
IC253
p.9

Tyvek®
IsoClean®
IC258
p.9

bulk



Tyvek®
IsoClean®
IC153
p.9

Tyvek®
IsoClean®
IC181
p.9

Tyvek®
IsoClean®
IC182
p.9

Tyvek®
IsoClean®
IC253
p.9

Tyvek®
IsoClean®
IC258
p.9

Suprel® LS
SR181
p.12

ProClean®
PC143
p.13

individual packages



Tyvek®
Micro-Clean® 2-1-2
CC252
p.14

COVERALLS—HOODED

STERILE

clean



Tyvek®
IsoClean®
IC105
p.9

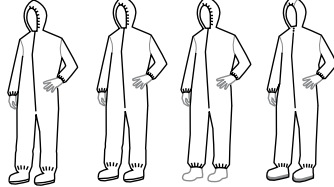
NON-STERILE

clean



Tyvek®
IsoClean®
IC105
p.9

bulk



Tyvek®
IsoClean®
IC105
p.9

Tyvek®
IsoClean®
IC106
p.9

Tyvek®
IsoClean®
IC180
p.10

ProClean®
PC122
p.13

HOODS & BOUFFANTS

STERILE

clean



Tyvek®
IsoClean®
IC666
p.10

Tyvek®
IsoClean®
IC668
p.10

Tyvek®
IsoClean®
IC729
p.10

NON-STERILE

clean



Tyvek®
IsoClean®
IC666
p.10

Tyvek®
IsoClean®
IC668
p.10

Tyvek®
IsoClean®
IC729
p.10

bulk



Tyvek®
IsoClean®
IC666
p.10

Tyvek®
IsoClean®
IC668
p.10

Tyvek®
IsoClean®
IC729
p.10

individual packages



ProClean®
PC663
p.13

How to select the right garments

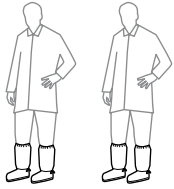
THE DUPONT CONTROLLED ENVIRONMENTS GARMENT PORTFOLIO

To help you select the right garments for your controlled environment, please select garment type, sterile or non-sterile, then select your preference for either clean-processed, bulk or individually packaged.

SHOE & BOOT COVERS

STERILE

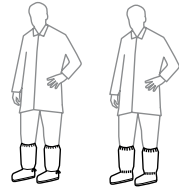
clean



Tyvek®
IsoClean®
IC446
p.11

Tyvek®
IsoClean®
IC458
p.11

individual packages

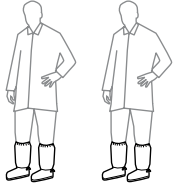


Tyvek®
IsoClean®
IC457
p.11

Suprel® LS
SR447
p.12

NON-STERILE

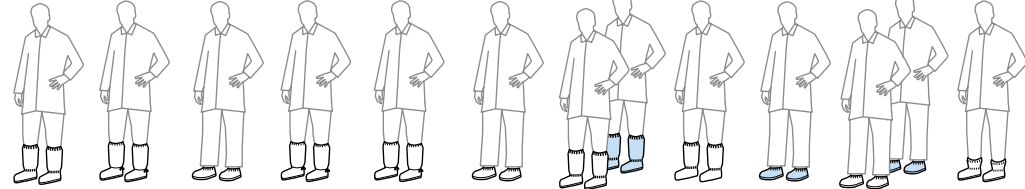
clean



Tyvek®
IsoClean®
IC446
p.11

Tyvek®
IsoClean®
IC458
p.11

bulk



Tyvek®
IsoClean®
IC444
p.11

Tyvek®
IsoClean®
IC446
p.11

Tyvek®
IsoClean®
IC451
p.11

Tyvek®
IsoClean®
IC457
p.11

Tyvek®
IsoClean®
IC458
p.11

Tyvek®
IsoClean®
IC461
p.11

Suprel® LS
SR447
p.12

ProClean®
PC444
p.13

Dura-Trac®
DT440
p.14

SureStep™
PE440
p.14

SureStep™
PE444
p.14

SLEEVES & CUFF TAPE

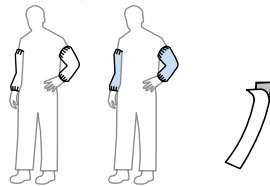
STERILE

clean



Tyvek®
IsoClean®
IC501
p.10

individual packages



Tyvek®
IsoClean®
IC501
p.10

gen. purpose
DE500
p.16

Tyvek®
IsoClean®
99479
p.11

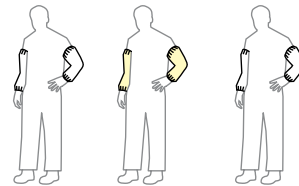
NON-STERILE

clean



Tyvek®
IsoClean®
IC501
p.10

bulk



Tyvek®
IsoClean®
IC501
p.10

gen. purpose
QC500
p.16

ProClean®
PC500
p.13

How to select the right garments

THE DUPONT CONTROLLED ENVIRONMENTS GARMENT PORTFOLIO

To help you select the right garments for your controlled environment, please select garment type, sterile or non-sterile, then select your preference for either clean-processed, bulk or individually packaged.

FROCKS & LAB COATS

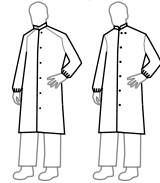
STERILE

clean



Tyvek®
IsoClean®
IC270
p.10

individual packages



Tyvek®
IsoClean®
IC262
p.10

Suprel™ LS
SR267
p.12

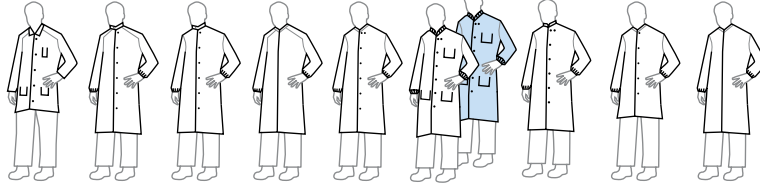
NON-STERILE

clean



Tyvek®
IsoClean®
IC270
p.10

bulk



Tyvek®
IsoClean®
IC224
p.10

Tyvek®
IsoClean®
IC262
p.10

Tyvek®
IsoClean®
IC263
p.10

Tyvek®
IsoClean®
IC264
p.10

Tyvek®
IsoClean®
IC270
p.10

Suprel™ LS
SR219
p.12

Suprel™ LS
SR267
p.12

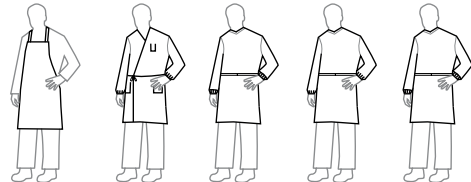
ProClean®
PC270
p.13

ProClean®
PC271
p.13

APRONS, GOWNS & SMOCKS

NON-STERILE

bulk



gen. purpose
TY273
p.16

Tyvek®
IsoClean®
IC226
p.10

Tyvek®
IsoClean®
IC701
p.10

Tyvek®
IsoClean®
IC704
p.10

gen. purpose
PP701
p.16

MASKS & FACE VEILS

STERILE

individual packages



Tyvek®
IsoClean®
IC731
p.11

Sierra™
ML730
p.15

Sierra™
ML736
p.15

Sierra™
ML737
p.15

NON-STERILE

individual packages



Tyvek®
IsoClean®
IC731
p.11

Sierra™
ML730
p.15

Sierra™
ML731
p.15

Sierra™
ML733
p.15

Sierra™
ML736
p.15

Sierra™
ML737
p.15

Sierra™
ML739
p.15

gen. purpose
PP740
p.16

gen. purpose
PP741
p.16

NOTE: Please substitute your size for ## when ordering. See p. 4 for full part number description.



hood: **IC668B**
overall: **IC181S**

DuPont™ Tyvek® IsoClean®

- Made from DuPont™ Tyvek® brand flashspun polyolefin protective material
- Unique, patented flashspinning process creates an excellent barrier to dry particles, microorganisms and non-hazardous liquids
- Comfortable, lightweight and durable
- Clean-processed garments offer lowest level of particle shedding within DuPont product portfolio
- Garments available gamma sterilized to an SAL of 10⁻⁶
- Serged or bound seams with covered elastic options
- Bound seam garments offer highest particle barrier within DuPont product portfolio
- Full traceability on all sterilized apparel
- Recyclable
- Gripper™ soles offer a higher level of slip resistance than standard PVC soles

CHOOSE FROM THESE OPTIONS:

- **CS** = Clean and Sterile: clean-processed, individually packaged and sterilized by gamma irradiation
- **OS** = Sterile: individually packaged and sterilized by gamma irradiation
- **OC** = Clean: clean-processed, individually packaged
- **OO** or **OB** = Bulk packaged
- **PI** = Individually packaged in an opaque bag

overall

IC253BWH##00250B
IC253BWH##00250S
IC253BWH##00250C
IC253BWH##0025CS
bound seams
bound neck
dolman sleeve
covered elastic wrist, ankle
zipper closure
white
25/cs
SM, MD, LG, XL, 2X, 3X, 4X, 5X



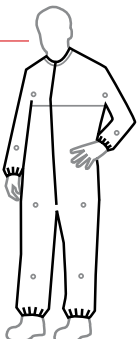
overall

IC182BWH##002500
IC182BWH##00250C
IC182BWH##0025CS
bound seams
bound neck
raglan sleeve
covered elastic wrist, ankle
zipper closure
white
25/cs
SM, MD, LG, XL, 2X, 3X, 4X



overall

IC254BWH##0025CS
bound seams
bound neck
dolman sleeve
covered elastic wrist, ankle
zipper closure
snaps for aseptic donning
white
25/cs
SM, MD, LG, XL, 2X, 3X, 4X



overall

IC153BWH##002500
bound seams
elastic neck
set sleeve
covered elastic wrist
zipper closure
white
25/cs
MD, LG, XL, 2X



overall

IC258SWH##00250B
IC258SWH##00250C
serged seams
bound neck
raglan sleeve
elastic wrist, ankle
zipper closure
white
25/cs
SM, MD, LG, XL, 2X, 3X, 4X



overall

IC181SWH##002500
IC181SWH##00250C
serged seams
standard collar
set sleeve
elastic wrist, ankle
zipper closure
white
25/cs
SM, MD, LG, XL, 2X, 3X, 4X



overall

IC105SWH##002500
IC105SWH##00250C
IC105SWH##0025CS
serged seams
standard hood
elastic hood opening
set sleeve
elastic wrist, ankle
attached thumb loops
zipper closure
attached boots with PVC soles
white
25/cs
MD, LG, XL, 2X, 3X



overall

IC106SWH##002500
serged seams
standard hood
elastic hood opening
set sleeve
elastic wrist, ankle
zipper closure
attached boots with slip-resistant Gripper™ PVC soles
white
25/cs
MD, LG, XL, 2X, 3X



PART NUMBER GUIDE

IC	253	B	WH	LG	0025	CS
fabric type	garment design	seam type	color	size	case count	options

NOTE: All sizes not available in all styles. For universal sizing use 00 in the part number.

Seams and closures have less barrier than fabric.

WARNING: Cleanroom apparel should not be used around heat, flames, sparks or in potentially flammable or explosive environments. Cleanroom fabrics should have slip-resistant materials on the outer sole of boots, shoe covers or other garment surfaces in conditions where slipping could occur.

NOTE: Please substitute your size for ## when ordering. See p. 4 for full part number description.

coverall

IC180SWH##002500
 serged seams
 standard hood
 elastic hood opening
 set sleeve
 elastic wrist, ankle
 zipper closure
 white
 25/cs
 MD, LG, XL, 2X, 3X



frock

IC270BWH##003000
IC270BWH##00300C
IC270BWH##0030CS
 bound seams
 bound neck
 set sleeve
 covered elastic wrist
 snap closure (6 + 1 adjustable)
 white
 30/cs
 SM, MD, LG, XL, 2X, 3X, 4X



frock

IC262SWH##00300B
IC262SWH##00300S
 serged seams
 high mandarin collar w/adjustable snaps
 raglan sleeve
 elastic wrist
 snap closure (6)
 generous cut
 white
 30/cs
 SM, MD, LG, XL, 2X, 3X, 4X for OB option
 MD, LG, XL, 2X, 3X for OS option



frock

IC263SWH##00300B
 serged seams
 high mandarin collar w/snap
 set sleeve
 elastic wrist
 snap closure (6)
 white
 30/cs
 SM, MD, LG, XL, 2X, 3X, 4X



frock

IC264SWH##00300B
 serged seams
 bound neck
 raglan sleeve
 elastic wrist
 zipper closure
 a-line
 white
 30/cs
 SM, MD, LG, XL, 2X, 3X, 4X



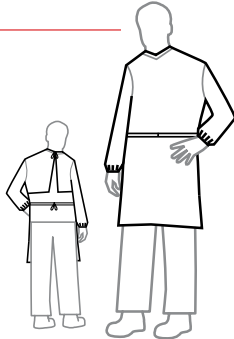
lab coat

IC224SWH##00300B
 serged seams
 laydown collar
 raglan sleeve
 snap closure (5)
 pockets (1 chest pencil, 2 lower front)
 white
 30/cs
 SM, MD, LG, XL, 2X



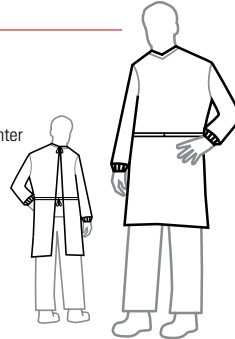
apron

IC704SWH##00300B
 serged seams
 bound neck
 set sleeve
 elastic wrist
 ties at neck & waist
 (ties from center front)
 laminate in apron
 white
 30/cs
 universal sizing (00)



gown

IC701SWH##003000
 serged seams
 bound neck w/ties
 knit cuff
 bound ties originating at center
 front waist
 white
 30/cs
 universal sizing (00)



smock

IC226SWH##00300B
 serged seams
 bound neck
 set sleeve
 elastic wrist
 wrap around (ties at waist)
 pockets (1 chest pencil, 2 lower front)
 white
 30/cs
 SM, MD, LG, XL



sleeves

IC501BWH##01000B
IC501BWH##01000C
IC501BWH##01000S
IC501BWH##01000CS
 bound seams
 covered elastic wrist, bicep
 18" length
 white
 100/cs
 universal sizing (00)



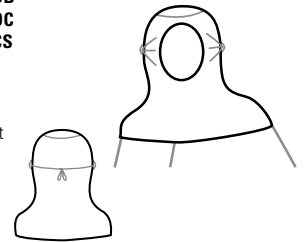
bouffant

IC729SWH##02500B
IC729SWH##02500C
IC729SWH##0250CS
 serged seams
 elastic headband
 21.5" diameter
 white
 250/cs
 universal sizing (00)



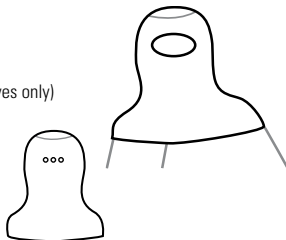
hood

IC668BWH##01000B
IC668BWH##01000C
IC668BWH##0100CS
 bound seams
 full face opening
 bound hood opening
 ties with loops for fit
 white
 100/cs
 universal sizing (00)



hood

IC666BWH##010000
IC666BWH##01000C
IC666BWH##0100CS
 bound seams
 bound hood opening (eyes only)
 snaps for fit
 bound bottom
 white
 100/cs
 MD, LG



PART NUMBER GUIDE

IC	253	B	WH	LG	0025	CS
fabric type	garment design	seam type	color	size	case count	options

NOTE: All sizes not available in all styles. For universal sizing use 00 in the part number.

Seams and closures have less barrier than fabric.

WARNING: Cleanroom apparel should not be used around heat, flames, sparks or in potentially flammable or explosive environments. Cleanroom fabrics should have slip-resistant materials on the outer sole of boots, shoe covers or other garment surfaces in conditions where slipping could occur.

NOTE: Please substitute your size for ## when ordering. See p. 4 for full part number description.

mask

IC7310BU##03000B
IC7310BU##03000S
 bound Tyvek® ties
 pleated
 polyethylene outer
 PBT filter
 metal nose piece
 blue
 300/cs
 7"
 universal sizing (00)



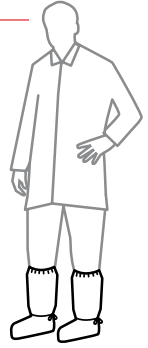
cuff tape

994790WH##04000S
 made of Tyvek® IsoClean®
 20" long x 3" wide
 white
 400/cs
 universal sizing (00)



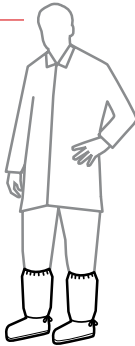
boot cover

IC458BWH##01000B
IC458BWH##01000C
IC458BWH##01000CS
 bound seams
 covered elastic opening
 ties at ankle
 Gripper™ sole
 18" high
 white
 100/cs
 MD, LG, XL



boot cover

IC446SWH##010000
IC446SWH##01000C
IC446SWH##01000CS
 serged seams
 elastic opening
 bound Tyvek® ties at ankle
 Gripper™ sole
 18" high
 white
 100/cs
 MD, LG, XL



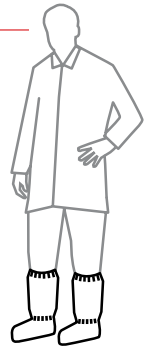
boot cover

IC457SWH##01000B
IC457SWH##01000S
 serged seams
 elastic opening
 ties at ankle
 PVC sole
 18" high
 white
 100/cs
 SM, MD, LG, XL



boot cover

IC444SWH##02000B
 serged seams
 elastic opening
 elastic ankle
 PVC sole
 15" high
 white
 200/cs
 MD, LG, XL



shoe cover

IC451SWH##01000B
 serged seams
 elastic opening
 Gripper™ sole
 5" high
 white
 100/cs
 MD, LG, XL



shoe cover

IC461SWH##03000B
 serged seams
 elastic opening
 PVC sole
 elastic toe
 5" high
 white
 300/cs
 SM, MD, LG, XL



PART NUMBER GUIDE

IC	253	B	WH	LG	0025	CS
fabric type	garment design	seam type	color	size	case count	options

NOTE: All sizes not available in all styles. For universal sizing use 00 in the part number.
 Seams and closures have less barrier than fabric.

WARNING: Cleanroom apparel should not be used around heat, flames, sparks or in potentially flammable or explosive environments. Cleanroom fabrics should have slip-resistant materials on the outer sole of boots, shoe covers or other garment surfaces in conditions where slipping could occur.

NOTE: Please substitute your size for ## when ordering. See p. 4 for full part number description.



DuPont™ Suprel™ LS

- Patented bi-component fabric based on DuPont Advanced Composite Technology™
- Superior balance of breathability and barrier protection
- Soft feel for exceptional comfort
- Greater ease of movement
- Serged seams
- Garments available gamma sterilized to an SAL of 10⁻⁶
- Full traceability on all sterilized apparel
- Gripper™ soles offer a higher level of slip resistance than standard PVC soles
- Available in blue and white

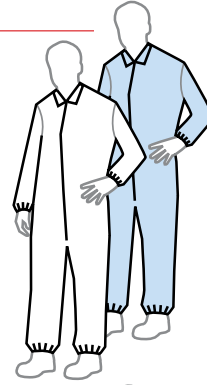
CHOOSE FROM THESE OPTIONS:

- **OS** = Sterile: individually packaged and sterilized by gamma irradiation
- **OO** = Bulk packaged

coverall

SR181SWH##002500
SR181SWH##00250S
SR181SBU##002500

serged seams
 laydown collar
 set sleeve
 elastic wrist, ankle
 zipper closure
 white, blue
 25/cs
 SM, MD, LG, XL, 2X, 3X, 4X



frock

SR267SWH##003000
SR267SWH##00300S

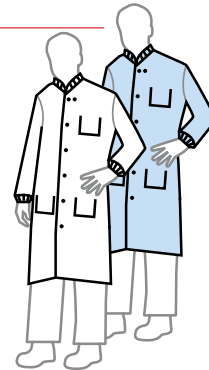
serged seams
 mandarin collar
 set sleeve
 knit cuff
 covered elastic wrist
 snap closure (6 + 1 adjustable)
 white
 30/cs
 SM, MD, LG, XL, 2X, 3X, 4X



lab coat

SR219SBU##003000
SR219SWH##003000

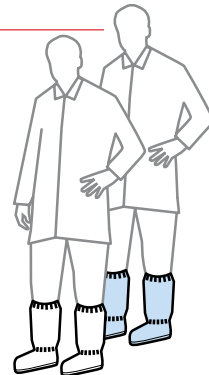
serged seams
 knit collar
 set sleeve
 knit cuff
 snap closure (6 + 1 adjustable)
 pockets (1 left chest pencil,
 2 lower front)
 white, blue
 30/cs
 SM, MD, LG, XL, 2X, 3X, 4X



boot cover

SR447SWH##010000
SR447SBU##010000
SR447SWH##01000S

serged seams
 elastic opening
 elastic ankle
 Gripper™ sole
 18" height
 white, blue
 100/cs
 MD, LG, XL



PART NUMBER GUIDE

IC	253	B	WH	LG	0025	CS
fabric type	garment design	seam type	color	size	case count	options

NOTE: All sizes not available in all styles. For universal sizing use 00 in the part number.

Seams and closures have less barrier than fabric.

WARNING: Cleanroom apparel should not be used around heat, flames, sparks or in potentially flammable or explosive environments. Cleanroom fabrics should have slip-resistant materials on the outer sole of boots, shoe covers or other garment surfaces in conditions where slipping could occur.

NOTE: Please substitute your size for ## when ordering. See p. 4 for full part number description.



coverall:
PC122S

DuPont™ ProClean®

- Microporous composite fabric
- Non-hazardous liquid and dry particulate barrier protection for cleanroom applications
- Serged seams

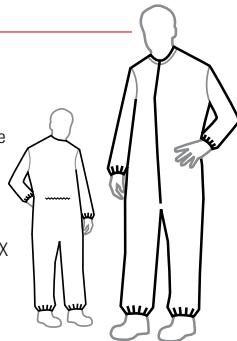
CHOOSE FROM THIS OPTION:

- **OS** = Sterile: individually packaged and sterilized by gamma irradiation
- **OB** = Bulk packaged

coverall

PC143SWH##0025OB

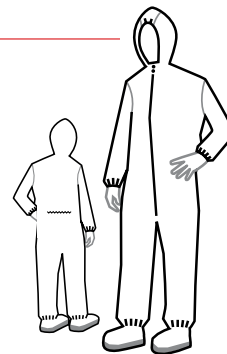
serged seams
bound neck
set sleeve
covered elastic wrist, ankle
zipper closure
enclosed elastic at back
white
25/cs
SM, MD, LG, XL, 2X, 3X, 4X



coverall

PC122SWH##0025OB

serged seams
attached hood
covered elastic gusset with bound face opening
set sleeve
covered elastic wrist, ankle
zipper closure
enclosed elastic at back
attached boots with slip-resistant covers
white
25/cs
SM, MD, LG, XL, 2X, 3X, 4X



frock

PC270SWH##0030OB

serged seams
bound neck
set sleeve
covered elastic wrist
snaps (5)
white
30/cs
SM, MD, LG, XL, 2X, 3X, 4X



frock

PC271SWH##0030OB

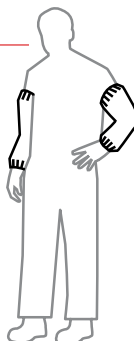
serged seams
bound neck
set sleeve
covered elastic wrist
zipper closure
white
30/cs
SM, MD, LG, XL, 2X, 3X, 4X



sleeve

PC500SWH##0200OB

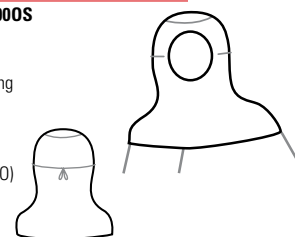
serged seams
covered elastic wrist, bicep
18" length
white
200/cs
universal sizing (00)



hood

PC663SWH##0100OS

serged seams
full face
bound hood opening
bound ties
white
100/cs
universal sizing (00)



boot cover

PC444SWH##0100OB

serged seams
covered elastic opening
elastic ankle
PVC sole
18" height
white
100/cs
MD, LG, XL



PART NUMBER GUIDE

IC	253	B	WH	LG	0025	CS
fabric type	garment design	seam type	color	size	case count	options

NOTE: All sizes not available in all styles. For universal sizing use 00 in the part number.

Seams and closures have less barrier than fabric.

WARNING: Cleanroom apparel should not be used around heat, flames, sparks or in potentially flammable or explosive environments. Cleanroom fabrics should have slip-resistant materials on the outer sole of boots, shoe covers or other garment surfaces in conditions where slipping could occur.

DuPont™ Tyvek® Micro-Clean® 2-1-2



coverall:
CC252B

NOTE: Please substitute your size for ## when ordering. See p. 4 for full part number description.

DuPont™ Tyvek® Micro-Clean® 2-1-2

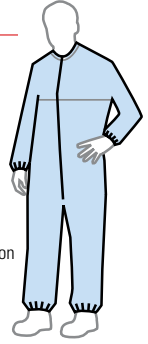
- Made from DuPont™ Tyvek® brand flashspun polyolefin protective material.
- Unique, patented flashspinning process creates an excellent barrier to dry particles and microorganisms
- Coated on both sides with proprietary 2-1-2 blue polymeric resin
- Antistatic treated
- Outstanding particle filtration efficiency
- Garments available gamma sterilized to an SAL of 10⁻⁶
- Cloth-like aesthetics
- Full traceability on all sterilized apparel

coverall

CC252BBU##00250S

CC252BBU##0025PI

- bound seams
- bound neck with loop at center back
- dolman sleeve
- covered elastic wrist, ankle
- zipper closure
- blue
- 25/cs
- SM, MD, LG, XL, 2X, 3X, 4X, 5X for OS option
- SM, MD, LG, XL, 2X, 3X, 4X for PI option



CHOOSE FROM THESE OPTIONS:

- **OS** = Sterile: individually packaged and sterilized by gamma irradiation
- **PI** = Individually packaged in opaque bag

DuPont™ SureStep™ / DuPont™ Dura-Trac™



shoe cover:
PE440S

DuPont™ SureStep™ / DuPont™ Dura-Trac™

- Spunbonded polypropylene with polyethylene film coating
- High slip resistance—both wet and dry
- Low linting, resists delamination
- SureStep™ available with a conductive strip

CHOOSE FROM THESE OPTIONS:

- **OO, OB** = Bulk packaged
- **CT** = Conductive strip

boot cover

PE444SWH##010000

- serged seams
- elastic opening
- elastic ankle
- 13" height
- white
- 100/cs
- LG, XL



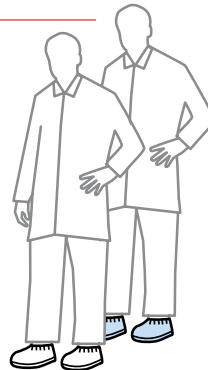
shoe cover

PE440SWH##020000

PE440SBU##020000

PE440SWH##0200CT

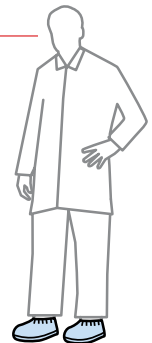
- serged seams
- elastic opening
- 5.5" height
- white, blue
- 200/cs
- MD, LG, XL
- MD only available in white & bulk packaged.



shoe cover

DT440SBU##03000B

- serged seams with heat seal
- elastic opening
- elastic toe, heel
- 6.5" height
- blue
- 300/cs
- LG, XL



PART NUMBER GUIDE

IC	253	B	WH	LG	0025	CS
fabric type	garment design	seam type	color	size	case count	options

NOTE: All sizes not available in all styles.

Seams and closures have less barrier than fabric.

WARNING: Cleanroom apparel should not be used around heat, flames, sparks or in potentially flammable or explosive environments. Cleanroom fabrics should have slip-resistant materials on the outer sole of boots, shoe covers or other garment surfaces in conditions where slipping could occur.

NOTE: Please substitute your size for ## when ordering. See p. 4 for full part number description.



mask:
ML7360

DuPont™ Sierra™

- Excellent balance of bacteria and particle filtration efficiency and breathability
- Available in 7" and 9" sizes
- Available in blue and white

CHOOSE FROM THESE OPTIONS:

- **OS** = Sterile: individually packaged and sterilized by gamma irradiation
- **BB** = 50/box
- **BH** = 50/bag

controlled environment mask

ML7360WH##0250BH
ML7360WH##0250OS

9" size
bound Tyvek® ties
pleated
rayon outer facing
metal nose piece
white
250/cs
universal sizing (00)



anti-fog mask

ML7370WH##0250BH
ML7370WH##0250OS

9" size
bound Tyvek® ties
pleated
rayon outer facing
metal nose piece
adhesive at nose
white
250/cs
universal sizing (00)



anti-fog mask

ML7300WH##0250BB
ML7300WH##0250BH
ML7300WH##0250OS

7" size
bound Tyvek® ties
pleated
rayon outer facing
metal nose piece
adhesive at nose
white
250/cs
universal sizing (00)



controlled environment mask

ML7390WH##0300BH

7" size
bound Tyvek® ties
pleated
rayon outer facing
metal nose piece
white
300/cs
universal sizing (00)



comfort mask

ML7310BU##0300BB

7" size
bound polypropylene ties
pleated
rayon outer facing
metal nose piece
blue
300/cs
universal sizing (00)



general mask

ML7330BU##0300BB
ML7330BU##0500BH

7" size
stretch ear loops
pleated
polypropylene outer facing
metal nose piece
blue
300 & 500/cs
universal sizing (00)



PART NUMBER GUIDE

IC	253	B	WH	LG	0025	CS
fabric type	garment design	seam type	color	size	case count	options

NOTE: For universal sizing use 00 in the part number.

Not for respiratory protection.

WARNING: Cleanroom apparel should not be used around heat, flames, sparks or in potentially flammable or explosive environments. Cleanroom fabrics should have slip-resistant materials on the outer sole of boots, shoe covers or other garment surfaces in conditions where slipping could occur.

General-purpose products

NOTE: Please substitute your size for ## when ordering. See p. 4 for full part number description.

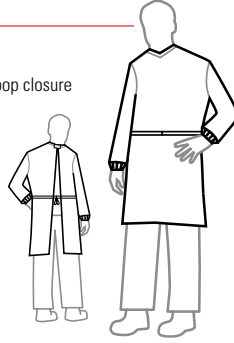


apron:
TY273B

gown

PP701FWH##005000

fell seams
bound neck w/hook-and-loop closure
knit cuff
bound ties at waist
polyethylene-coated front
breathable back
white
50/cs
universal sizing (00)



apron

TY273BWH##010000

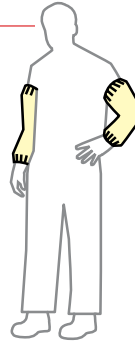
bound seams
bound neck
ties closure
Tyvek® ties at waist
white
100/cs
universal sizing (00)



sleeve

QC500BYL##02000B

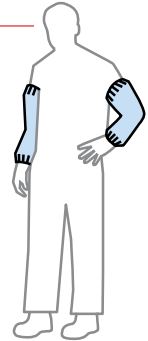
bound seams
tunneled elastic wrist
Tychem® QC
21" length
yellow
200/cs
universal sizing (00)



sleeve

DE500SBU##01000S

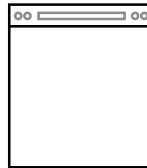
serged seams
covered elastic wrist and bicep
hydroentangled polyester and cellulose
18" length
blue
100/cs
universal sizing (00)



cleanroom face veil

PP7400WH##0150BH

stainless steel snaps
metal nose piece
white
150/cs
universal sizing (00)



cleanroom face veil

PP7410WH##0150BH

elastic head band
metal nose piece
white
150/cs
universal sizing (00)



PART NUMBER GUIDE

IC	253	B	WH	LG	0025	CS
fabric type	garment design	seam type	color	size	case count	options

NOTE: For universal sizing use 00 in the part number.

Seams and closures have less barrier than fabric.

WARNING: Cleanroom apparel should not be used around heat, flames, sparks or in potentially flammable or explosive environments. Cleanroom fabrics should have slip-resistant materials on the outer sole of boots, shoe covers or other garment surfaces in conditions where slipping could occur.

DuPont™ Sontara® wipes

DUPONT™ SONTARA® MICRO-LEVEL CLEANING WIPES

DuPont™ Sontara® micro-level cleaning fabrics are high-performance, absorbent wipes for cleanrooms. Because they are made using the DuPont hydroentangling process, where needle-like water jets form a strong, nonwoven fabric without any binders, these fabrics are ideally suited for cleanroom use.

DuPont™ Sontara® micro-level cleaning fabrics have low particle generation and are inherently absorbent. With low extractables and ion content properties, as well as strength and resistance to solvents, wipes made of DuPont™ Sontara® are a smart solution for your cleanroom requirements.

Wiping needs and required levels of cleanliness differ—even in the same cleanroom—therefore, DuPont created a range of Sontara® micro-level cleaning fabrics. It's best to find a match between application and the wipe fabric for efficiency and cost effectiveness. To determine which Sontara® micro-level cleaning fabric best meets your controlled environment application, visit www.Sontara.com or call 1.888.4.Sontara (1.888.476.6827).



Gown recommendations

SEAM CONSTRUCTION

Even the best protective fabrics are useless without strong, tight seams.



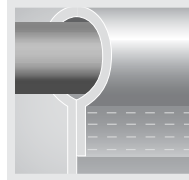
Serged or sewn

A seam produced when three threads are interlocked around the raw edges of two pieces of material for a strong, stress-resistant seam.



Bound

Tightly sewn with a reinforced outer binding to increase seam strength and barrier. For potential misting exposure of non-hazardous liquids or particle penetration through the seam.



Covered elastic

Elastic covered by garment material so elastic is not exposed.

ISO 16644-1 AIR CLEANLINESS CLASSES FOR CLEANROOMS AND CLEAN ZONES

ISO Classification Number	0.1 µm	0.2 µm	0.3 µm	0.5 µm	1.0 µm	5.0 µm	SI	English Former FED-STD-209E
ISO Class 1	10	2						
ISO Class 2	100	24	10	4				
ISO Class 3	1000	237	102	35	8		M 1.5	1
ISO Class 4	10000	2370	1020	352	83		M 2.5	10
ISO Class 5	100000	23700	10200	3520	832	29	M 3.5	100
ISO Class 6	1000000	237000	102000	35200	8320	293	M 4.5	1000
ISO Class 7				352000	83200	2930	M 5.5	10000
ISO Class 8				3520000	832000	29300	M 6.5	100000
ISO Class 9				35200000	8320000	293000		

MINIMUM GOWNING RECOMMENDATIONS

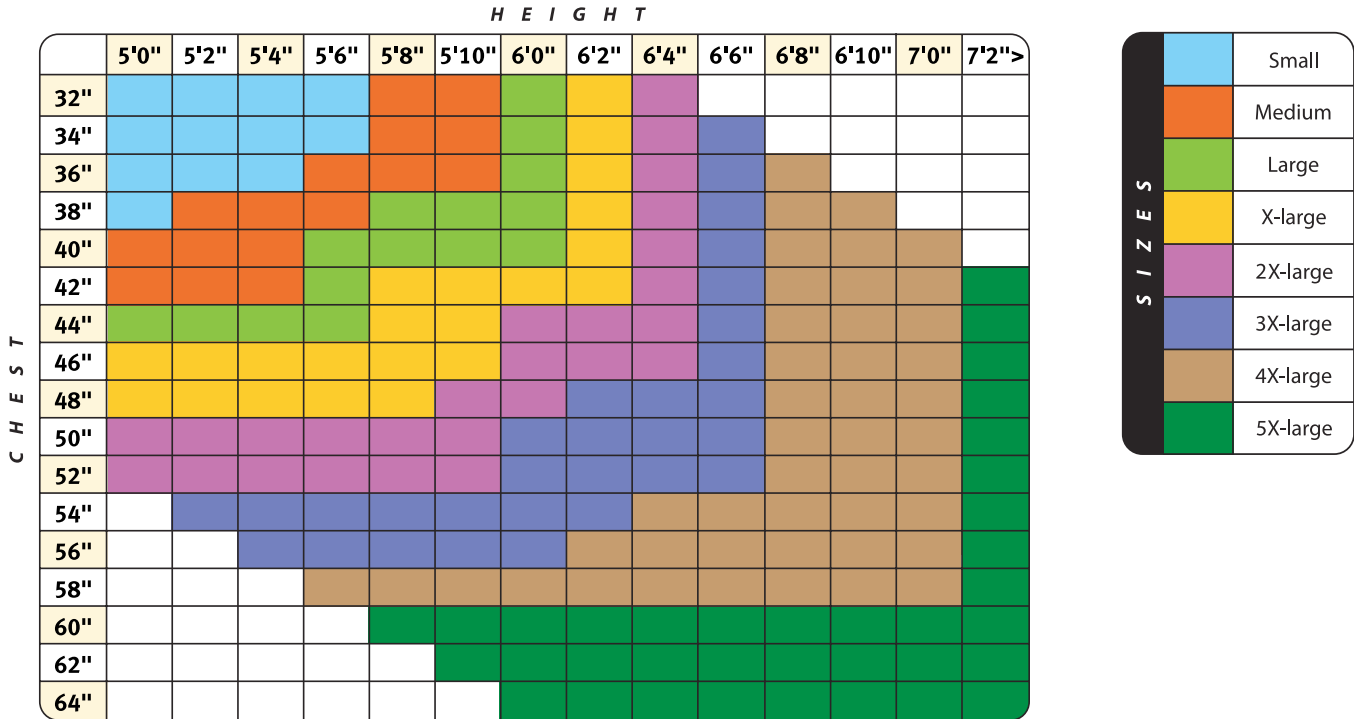
	ISO Class 8 (Class 100,000)	ISO Class 7 (Class 10,000)	ISO Class 6 (Class 1,000)	ISO Class 5 (Class 100)	ISO Class 4 (Class 10)
Hair cover	•	•	•	•	•
Hood				•	•
Face mask				•	•
Frock	•	•			
Coverall			•	•	•
Shoe covers	•	•			
Boots			•	•	•

IEST-RP-CC-003.3

Sizing chart

SIZING CHART FOR DUPONT CONTROLLED ENVIRONMENTS GARMENTS

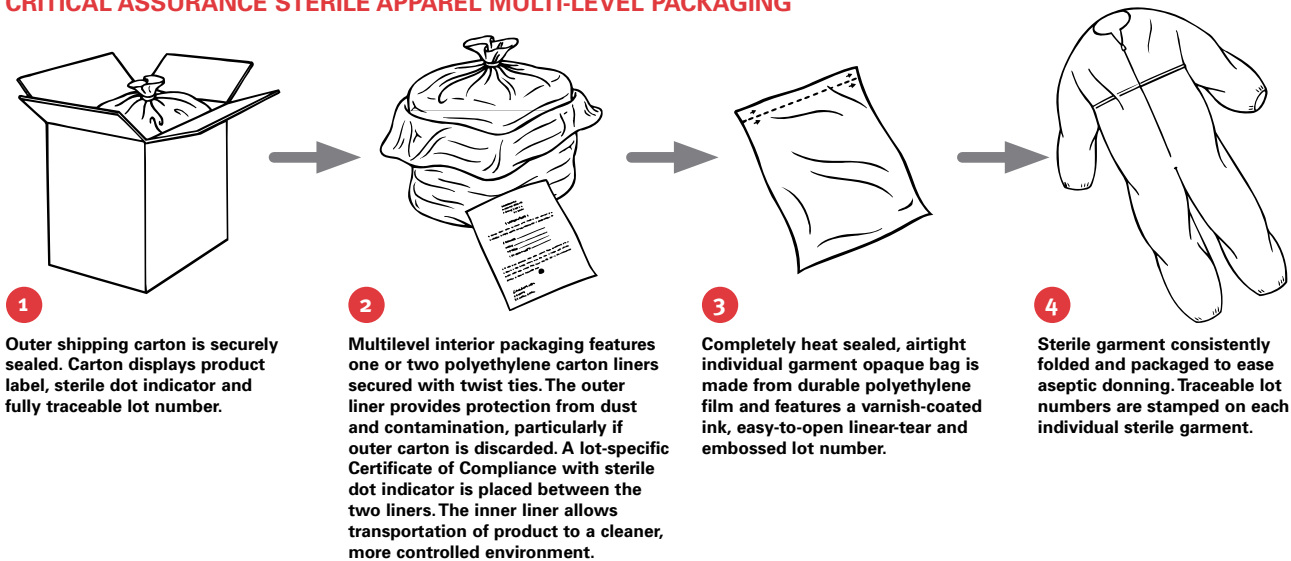
Use this chart to determine what size garment is right for you. Sizes are based on an individual's height and chest size.



S I Z E S	Small
	Medium
	Large
	X-large
	2X-large
	3X-large
	4X-large
	5X-large

Sterile packaging process

CRITICAL ASSURANCE STERILE APPAREL MULTI-LEVEL PACKAGING



LATEX STATEMENT: As of January 1, 2006, DuPont production specifications exclude use of components containing natural rubber latex in the manufacture of DuPont™ Tyvek® IsoClean®, Suprel™ LS and ProClean® garments. Notwithstanding, DuPont™ Tyvek® Micro-Clean® 2-1-2 produced by Cardinal Health prior to May 2008 may contain dry crumb natural rubber latex.

DuPont production specifications for Gripper™ PVC exclude use of latex. Notwithstanding, DuPont cannot guarantee the absence of latex in these shoe or boot covers.

Anyone who begins to exhibit allergic response during the use of DuPont products should immediately cease using these products. The incident should also be reported to DuPont at 1.800.441.3637.

SILICONE STATEMENT: In the past, DuPont has found that threads and zippers can be the most significant source of silicone oil contamination in garments. DuPont specifies that threads and zippers used in Tyvek® IsoClean®, Suprel™ LS and ProClean® garments be manufactured without the use of silicone oils. Notwithstanding, DuPont cannot guarantee the absence of silicone oils on these garments nor can DuPont confirm silicone oil prohibition in DuPont™ Tyvek® Micro-Clean® 2-1-2 produced by Cardinal Health prior to May 2008.

For end users with concerns about contamination with silicone oils or any other contaminants, the best practice is to audit inbound materials, including garments, for those contaminants.

This information is based upon technical data that DuPont believes reliable. It is subject to revision as additional knowledge and experience are gained. DuPont makes no guarantee of results and assumes no obligation or liability in connection with this information. It is the user's responsibility to determine the level of toxicity and the proper personal protective equipment needed. The information set forth herein reflects laboratory performance of fabrics, not complete garments, under controlled conditions. It is intended for information use by persons having technical skill for evaluation under the specific end-use conditions, at their own discretion and risk.

Anyone intending to use this information should first verify that the garment selected is suitable for the intended use. In many cases, seams and closures may provide less barrier than the fabric. If the fabric becomes torn, abraded or punctured, end user should discontinue use of garment to avoid compromising the barrier protection. **SINCE CONDITIONS OF USE ARE OUTSIDE OUR CONTROL, WE MAKE NO WARRANTIES, EXPRESSED OR IMPLIED, INCLUDING WITHOUT LIMITATION, NO WARRANTIES OF MERCHANTABILITY OR FITNESS FOR A PARTICULAR USE AND ASSUME NO LIABILITY IN CONNECTION WITH ANY USE OF THIS INFORMATION.** This information is not intended as a license to operate under or a recommendation to infringe any patent, trademark or technical information of DuPont or others covering any material or its use.

WARNINGS: 1) DuPont garments and accessories for controlled environments are not flame-resistant and should not be used around heat, flame, sparks or in potentially flammable or explosive environments. **2)** Garments made of Tyvek® should have slip-resistant or antislip materials on the outer surface of boots, shoe covers or other garment surfaces in conditions where slipping could occur.

Copyright © 2010 DuPont. The DuPont Oval Logo, DuPont™, The miracles of science™, Advanced Composite Technology™, Dura-Trac™, Gripper™, IsoClean®, Micro-Clean®, ProClean®, Sierra™, Sontara®, Suprel™, SureStep™, Tychem™ and Tyvek® are registered trademarks or trademarks of E.I. du Pont de Nemours and Company or its affiliates. All rights reserved. K-17384-1 3/10



The miracles of science™

Customer Service:

US 1.800.931.3456

Canada 1.800.387.9326

Mexico 01800 849 75 14 or 011 52 55 5722 1150

For DuPont Controlled Environments

apparel and accessories, visit

www.ControlledEnvironments.DuPont.com

For Sontara® wiping products, visit

www.Sontara.com