

Dustless

# CutBuddie® for cutting and tuck-pointing with angle grinders

Save Time  
& Money in  
Clean Up



OSHA  
SILICA RULE  
EPA RRP



5" Model D1730  
7" Model D1750



Without Dust Collection



With Dust Collection



Fits grinders made by Dewalt®, Milwaukee®, Bosch®, Makita®, Metabo®, Ryobi®, Ridgid®, and more...

## Features:

- 5" Model fits 4" - 6" grinders and 7" Model fits 7" - 9" grinders
- **Universal mounting** system fits a wide variety of grinders from major brands
- Durable construction will withstand daily wear and tear
- Metal skid-plate provides increased functionality and durability
- Patented design only requires 2-steps to mount and be ready to work
- Adjustable shroud depth allows cuts from .25" to 1.2" deep

CutBuddie includes:

- |                               |                       |
|-------------------------------|-----------------------|
| (1) shroud                    | (1) 18" flexible hose |
| (3) height adjustment spacers | (1) zip tie           |
| (1) arbor adaptor             |                       |

Dustless Technologies and this product are not affiliated, connected, associated with, sponsored, endorsed, or approved by any of DEWALT Power Tools and Accessories, Milwaukee Tool, Makita, Metabowerke GMBH, RIDGID Inc, Ryobi Limited, or Robert Bosch GMBH.

DEWALT® is a registered trademark of DEWALT Power Tools and Accessories  
MILWAUKEE® is a registered trademark of MILWAUKEE TOOL.  
MAKITA® is a registered trademark of MAKITA.  
METABO® is a registered trademark of Metabowerke GMBH (Metabo).  
RYOBI® is a registered trademark of Ryobi Limited.  
The RIDGID® trademark and logo are registered trademarks of Ridgid, Inc. in the U.S. and other countries.

**WARNING!** If using this product in the removal of lead paint, a Dustless® HEPA vacuum must be used. The removal of old paint may generate dust or fumes that contain lead. Exposure to lead may cause brain damage or other adverse health effects, especially in young children and pregnant women. Follow all federal, state, and local laws including the U.S. Environmental Protection Agency's Renovation, Repair and Painting law or similar state law.

★ Designed in the US ★  
Assembled from US & Imported Parts

Dustless  
TECHNOLOGIES

800.568.3949  
www.DustlessTools.com

# Dustless<sup>®</sup> OSHA Silica Rule Compliance Guide

When cutting or tuck-pointing with a hand-held grinder, **OSHA** requires two items:

- ✓ A commercially available dust collection shroud attached to the worker's tool
- ✓ A 99% efficient dust collection system that provides 25 CFM\* per inch of wheel diameter and includes a filter cleaning mechanism

\*Cubic feet per minute of air flow

Dustless Technologies makes the **most universal** and **most cost-effective** OSHA-compliant dust collection systems on the market. No need to replace your existing tools!

## When cutting with a 4" - 6" angle grinder and a cutting wheel up to 5"



CutBuddie Dust Shroud  
(5" Model D1730)



Wet+Dry  
DustlessVac<sup>®</sup>  
(Model D1603)  
**130 CFM**

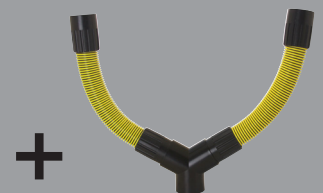
## When cutting with a 7" - 9" angle grinder and a cutting wheel up to 7"



CutBuddie  
Dust Shroud  
(7" Model D1750)



Wet+Dry  
DustlessVac<sup>®</sup>  
(Model D1603)  
+  
HEPA Wet+Dry  
DustlessVac<sup>®</sup>  
(Model D1606)\*  
**260 CFM**



Y-Connector Kit  
(D0014)

\*The most affordable option is to combine two Wet+Dry DustlessVacs (D1603). However, OSHA requires a HEPA vacuum (D1606) for housekeeping tasks and for vacuuming drill holes.



**NOTE:** When cutting concrete **indoors** with a grinder of **any size**, OSHA requires protection rated with an approved protection factor (**APF**) of **10** for shifts greater than 4 hours (regardless of dust control systems). When removing mortar (tuck-pointing), OSHA requires **APF 10** for shifts up to 4 hours and **APF 25** for shifts greater than 4 hours. **APF 10** includes half masks and some dust masks. **APF 25** includes powered air-purifying respirators (PAPR).

Consult your safety equipment supplier for details

For detailed OSHA Silica Rule information, visit [www.DustlessTools.com](http://www.DustlessTools.com)

SF018\_0517