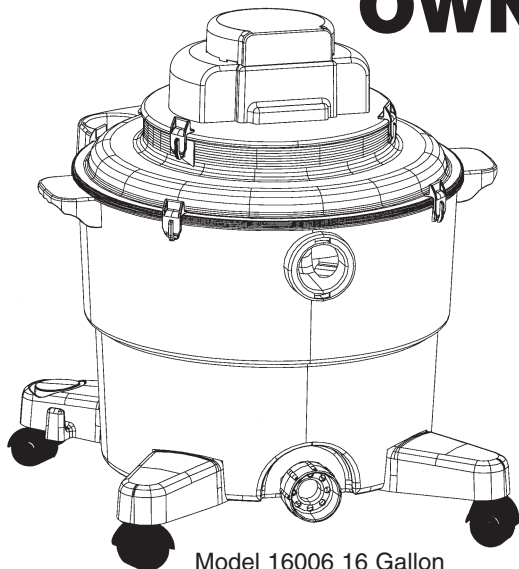


Dustless Technologies
“DUSTLESS” HEPA VACUUM
OWNER’S MANUAL



Model 16006 16 Gallon

CONGRATULATIONS: You are now the owner of a “Dustless” HEPA Vacuum which incorporates the latest advancements in HEPA technology. This vacuum is different from anything in its category.

*Once again **CONGRATULATIONS***

This cleaner was inspected and packaged carefully before being shipped from the factory.

If you should happen to need assistance during assembly or operation, call 1-800-568-3949 for our customer service department.

Serial Number _____

Model Number _____

Model and serial numbers are found on the side of the motor cover. You should record both model and serial numbers in a safe place for future use.

FULL ONE-YEAR WARRANTY ON DUSTLESS HEPA VACUUM

If within one year from the date of purchase, this “Dustless” HEPA Vacuum fails due to a defect in material or workmanship, Dustless Technologies will repair or replace it, free of charge. Please note that this warranty is limited to and applies only to the original purchaser “For Household Use Only,” “POUR USAGE ME’NAGER TYPE MENAGER”, so long as that use is in accordance with instructions and limitations set out in this manual. Filters are not warranted for the 1 year period. If this “Dustless” HEPA Vacuum is used for commercial or rental purposes, this warranty coverage applies for 90 days from date of purchase.

Warranty registration - Please fill out and return the warranty registration card accompanying your cleaner. Proof of purchase date will be needed for warranty work. Warranty may be completed online at www.dustlesstechnologies.com.

Obtaining Warranty Service - Warranty Service is available by simply contacting the factory at 1-800-568-3949. This warranty gives you specific legal rights, and you may also have other rights which vary from state to state. There are no warranties, express or implied, written or verbal, which extend beyond the description in this manual.

Dustless Technologies • 1285 East 650 South, Price, Utah 84501

IMPORTANT SAFETY INSTRUCTIONS IMPORTANTES MESURES DE SECURITE IMPORTANTE PARA SU SEGURIDAD

SAVE THESE INSTRUCTIONS

CONSERVER CES INSTRUCTIONS

GUARDAR ESTA INSTRUCCIONES

- Read the Owner's Manual completely before attempting to operate this unit.
- Always check the filters before each use.

WARNING – To avoid risk of electrical shock, do not use outdoors or on wet surfaces.

AVERTISSEMENT – Pour réduire les risques de choc électrique, ne pas utiliser à l'extérieur et ne pas aspirer de matières humides.

ADVERTENCIA – Para reducir el riesgo de un electrochoque, no usarlo afuera o mojado.

- Connect to a properly grounded outlet. See grounding instructions.
- Don't change filters, clean the unit, or empty the canister until the plug has been disconnected from the electrical outlet. Always unplug unit when not in use and before servicing.

WARNING – To reduce the risk of burns, fire, electric shock, or personal injury:

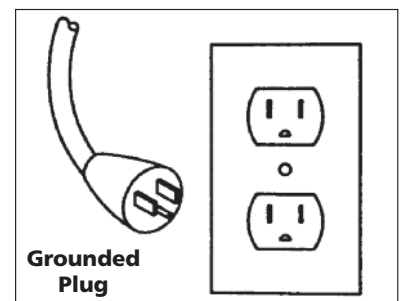
- Do not allow this unit to be used as a toy or to run unattended at any time. Keep children away from this unit.
- Do not use accessories except those recommended and provided by Dustless Technologies. Use this unit only for its intended use as described in this manual. Use of accessories not recommended by the manufacturer may cause fire, electric shock, or injury. (See *parts list*)
- Do not operate this unit in an enclosed space where flammable, explosive or toxic vapors are given off by oil-base paint, paint thinner, gasoline, etc.
- To avoid the igniting of vapors or dust due to the arcing of the motor brushes, do not pick up flammable or readily combustible material.
- Do not expose your HEPA Vacuum to excessive heat as damage to your vacuum may occur and the 1 year warranty will be null and void.
- Do not pick up anything that is burning or smoking, such as cigarettes, matches, or hot ashes/Not intended for ash removal
- Do not use without HEPA filter in place.
- Do not pull unit by the suction hose.
- Do not abuse cord. Never carry your HEPA Vacuum by the cord or pull cord to disconnect it from the outlet. Grasp the plug, not the cord.
- Do not leave the cord lying on the floor once you have finished the cleaning job. It can become a tripping hazard.
- Never handle plug, cord, or cleaner with wet hands.
- Never drop or insert any objects into any openings. Do not use with any opening blocked; keep free of dust, lint, hair, and anything that may reduce air flow.
- Keep cord away from heat, oil and sharp edges. Do not close doors on the cord or snag it under furniture or pull around corners with sharp edges.
- The operation of a HEPA Vacuum can result in foreign objects being blown into your eyes, which can result in eye damage. Always wear safety goggles when operating this vacuum.
- Use special care when emptying heavily loaded canisters.
- Do not use on wet surfaces. Do not leave appliance when plugged in. Unplug from outlet when not in use and before servicing. Do not use with damaged cord or plug if appliance is not working as it should, has been dropped, damaged, left outdoors, or dropped into water.
- Wear ear protection if operating cleaner for a prolonged period of time.
- Caution-Motor cooling air is not filtered-there may be carbon dust emitted from the brushes.

GROUNDING INSTRUCTIONS:

This appliance must be grounded. If it should malfunction or breakdown, grounding provides a path of least resistance for electric current to reduce the risk of electric shock. This appliance is equipped with a cord having an equipment - grounding conductor and grounding plug. The plug must be inserted into an appropriate outlet that is properly installed and grounded in accordance with all local codes and ordinances.

DANGER - Improper connection of the equipment grounding conductor can result in a risk of electric shock. Check with a qualified electrician or service person if you are in doubt as to whether the outlet is properly grounded. Do not modify the plug provided with the appliance.

NOTE: Static shocks are common in dry areas or when the relative humidity of the air is low. This is only temporary and does not affect the use of the HEPA Vacuum.



GENERAL INFORMATION

Automatic Suction Shut-Off

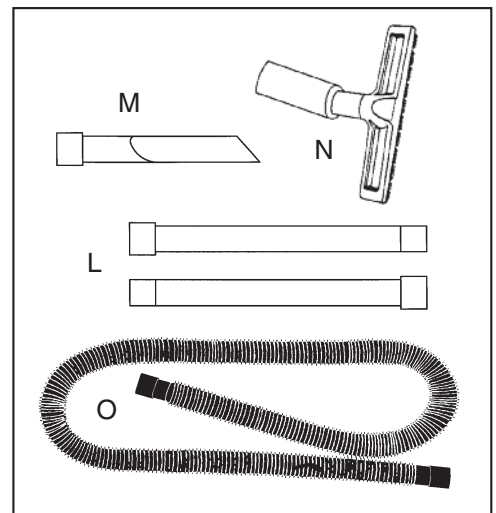
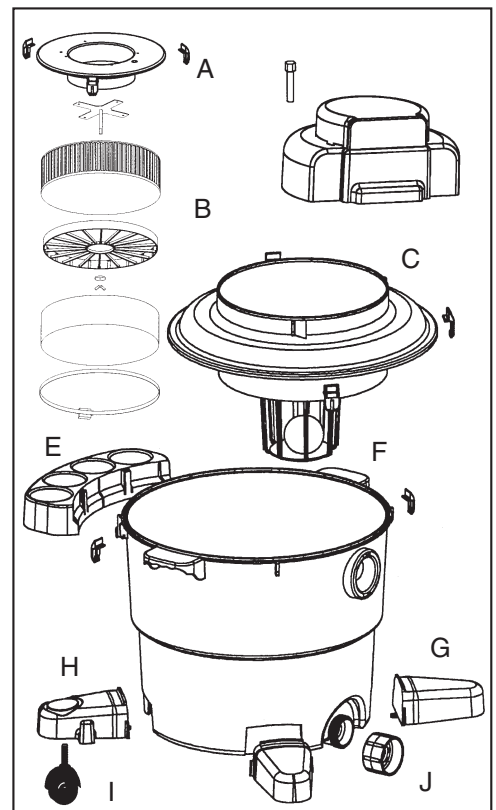
NOTE: The unit must be used in the upright position at all times, otherwise the automatic suction shut-off will activate.

Unpacking and Checking Carton Contents

Remove entire contents of carton. Check each item against the Carton Contents List. Notify Love-Less Ash immediately if any parts are damaged or missing.

Carton Contents List

Key	Part No	Qty	Description
A	04503	1	Noggle Cover
A	11112	1	Motor Cover
A	11121	1	W/D Lid
B	93141	1	Hose Clamp (12 in)
B	13301	1	HEPA Filter Cover
B	94521	1	Wing Nut
B	91522	1	Rubber Washer
B	13311	1	HEPA Filter Cover Support
B	13201	1	HEPA Filter
B	13200	1	Cross Piece & Stem
C	15001	1	Intermediate Cover Assembly
D	11221	7	Lid Clamps
E	12501	1	Tool Tray
F	12001	1	Tank Assembly
G	12301	2	Front Legs (smooth)
H	12311	2	Back Legs (w/hooks)
	91523	4	Black Pan Screws
I	12321	4	Casters
J	12141	1	Drain Cap and O-ring
L	14131	2	Extension Wands
M	14121	1	W/D Crevice Tool
N	14110	1	W/D Floor Tool
	18506	1	Hepa Vac Owner's Manual
	18511	1	Warranty Card
O	14251	1	12' Hose - Model 16006



Assembly

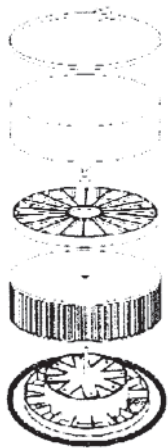
Leg Assembly

Turn tank upside down. Front legs are on either side of the drain port opening. These front legs do not have the small hooks on either side. The back legs do have the hooks. These hooks are for the hose to rest on when in storage.

Align legs with openings provided on bottom of the canister and slide into place. The holes will only align in proper position for front and back legs. Insert black support screw into hole and tighten screw with a Phillips screwdriver. Repeat with remaining legs.

Turn cleaner tank right side up.

Place intermediate cover right side up and set on top of the tank.



HEPA Filter Assembly

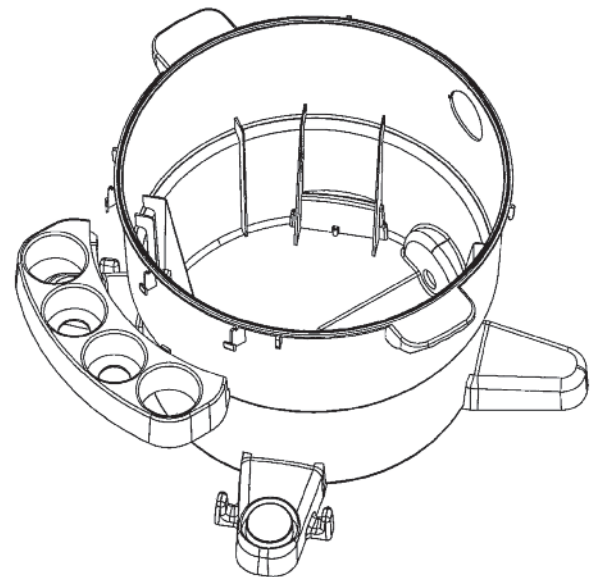
Your HEPA Filter is preassembled, to your vacuum, at the factory, so the following are the directions for reinstallation:

To install the HEPA filter properly, place the lid upside down. Install the HEPA filter with the rubber gasket down so the rubber gasket rests on a rib of the lid. The HEPA filter is held in place with a rubber sealed washer and wing nut that are tightened down. The washer is installed with the rubber side down. Make sure the HEPA filter cover support part number 13205 is in place before the HEPA filter cover part number 13301 is installed. Micro-Prefilters are installed correctly when the cardboard collar with the rubber gasket is fitted over the intake port on the inside of the barrel. Please refer to the installation instructions on the Micro-Pre-filter packaging for proper installation.

Turn right side up.

Screw the Noggle cover into the top of the lid - only finger tight!! Do not over tighten. This part must be in place to maintain suction.

The on/off switch is located on the side of the motor cover.



Attach Tool Tray (see picture)

Align the three slots on the edge of the tool tray with the three guides on the rear side of the tank and press the tool tray toward the tank as you push the tray down. The two locking tabs will slide under the rim of the tank and catch. By pushing the tray down and toward the tank it will lock into place.

Attach hose, wands and cleaning tools

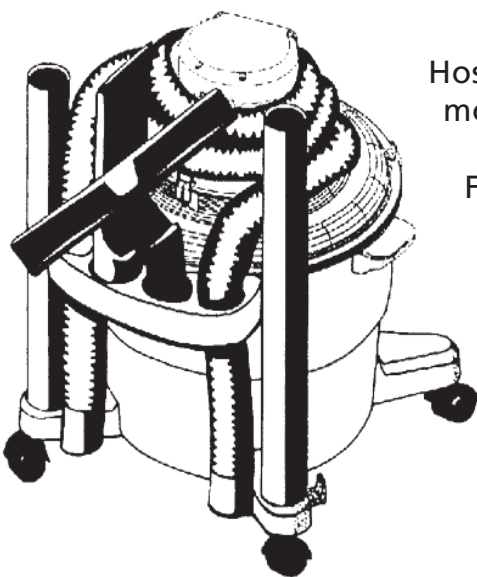
Hose and tools are stored on the unit. The hose will loop around motor and through the two outside holes of the tool tray.

For convenience, additional tools can be stored on tool tray when not in use.

To Use Accessories

Push hose into tank port; twist hose to tighten or loosen connection.

The wands and tools attach to hose in the same manner.



HOW TO USE

Extension cord instructions:

Use an outdoor, grounding type SJT extension cord of 16 gauge (up to 35 feet) or 14 gauge (any length). The extension cord must employ a 3-prong grounding type plug and a 3-pole receptacle that accepts the machine plug.

Filters

Do not operate cleaner without HEPA filters in place.

To protect the HEPA filter it is recommended that the vacuum be used with Micro-Prefilter part number 13141 and HEPA filter cover part number 13301.

All filters should be discarded after use, no attempt to clean filters should be made.

To assure that your cleaner operates at peak performance, it is imperative that you use only genuine DUSTLESS TECHNOLOGIES filters.

Dry Pickup:

To protect the HEPA filter, always use Micro-Prefilter part number 13141 and HEPA filter cover part number 13301.

The HEPA filter cover will fit snugly over the HEPA filter with the seams on the inside. The HEPA filter cover is secured in place to the HEPA filter with the supplied 12" hose clamp. The hose clamp is tightened with the band over the solid metal base and should never be tightened on the expanded metal part of the HEPA filter. Follow the detailed instructions on HEPA filter assembly.

After Dry Pickup:

Disconnect the cleaner from electrical outlet.

Release lid clips and remove motor lid assembly and intermediate cover from tank. Dispose of Micro-Prefilter bag and contents into a suitable receptacle.

To avoid back strain, do not lift a full tank.

Wet Pickup:

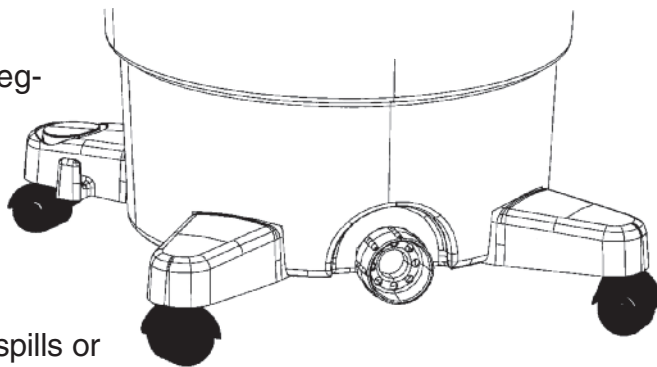
To protect the HEPA filter, always use the HEPA filter cover part number 13301.

After Wet Pickup:

Unscrew drain cap from bottom of tank. This drain can be regulated so that a floor drain can be used conveniently. The liquid can be regulated from a drip to a full flow.

The suction hose can be put in the drain cap to drain liquid to an extended location.

Rinse inside of tank thoroughly with clean water particularly if spills or other substances other than water have been picked up. Wipe inside of tank dry. Screw drain cap back on tightly so it is ready for use again.



Automatic Wet Shut-off:

When the tank is full of liquid, the automatic shut-off mechanism will shut off air flow. When this happens, the motor sound will become noticeably higher in pitch. Turn cleaner off and empty tank to continue use.

Storage:

Disconnect cleaner from electrical outlet. Empty tank. Rinse inside of tank thoroughly with clean water particularly if spills or other liquid substances other than plain water have been picked up. Wipe inside of tank dry. If tank is stored with liquid left inside, the moisture may cause damage to the motor and its internal parts.

Wands and tools as well as hose store right on the tool tray. Wands store on each of the back legs in the circular grooves provided.

Lubrication:

The motor is equipped with bearings which contain sufficient lubrication for the life of the motor. The addition of lubricant could cause damage. Do not add lubricant to motor bearings.

If you have a problem:

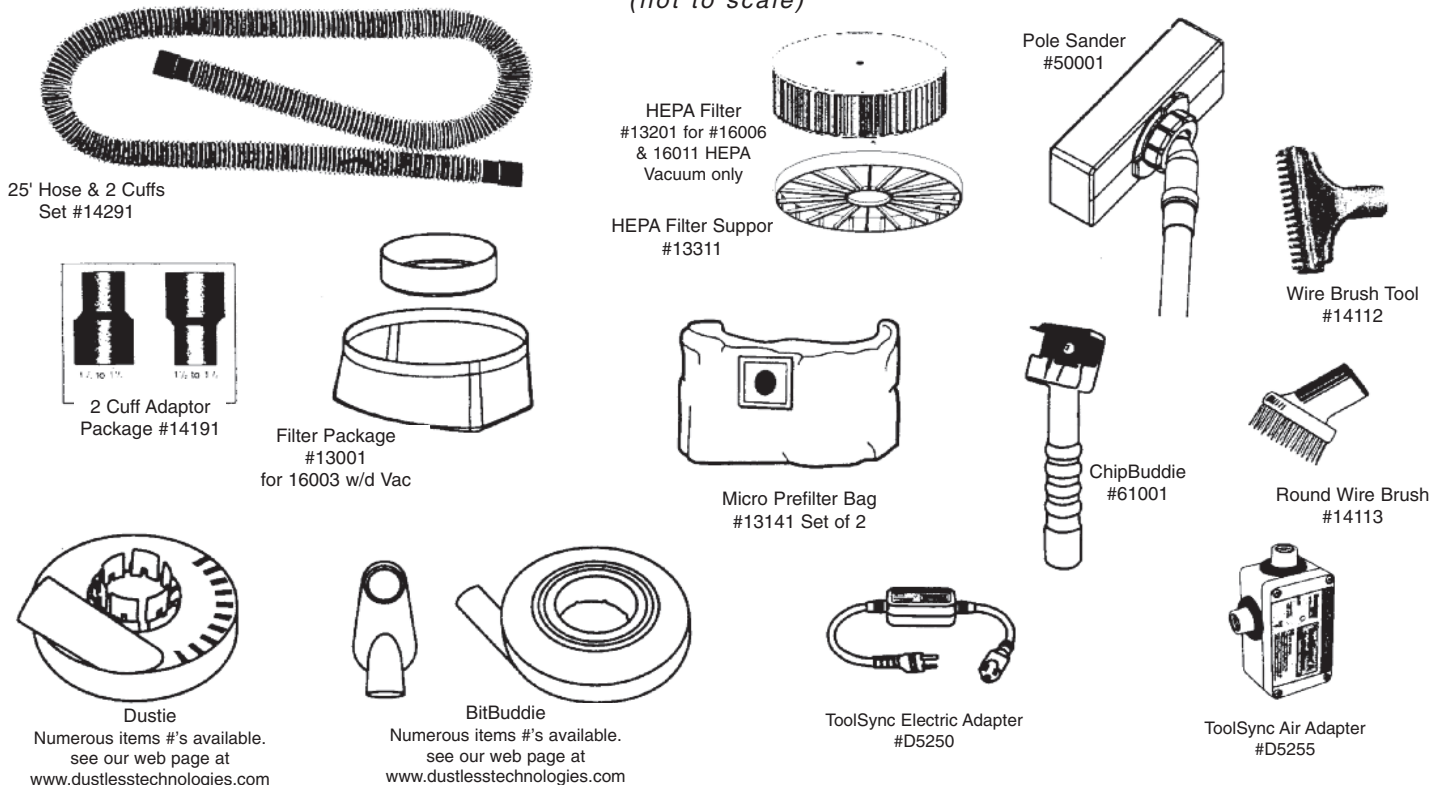
This appliance was inspected thoroughly and was in good operating condition when it was shipped from the factory. If a minor problem occurs, it usually can be solved quite easily when the cause is found. Therefore, this Trouble Shooting Guide is provided for your convenience.

TROUBLE SHOOTING GUIDE

Problem	Possible Cause	Possible Solution
Cleaner won't run	Not firmly plugged in No voltage in wall plug Blown fuse/tripped breaker	Plug in unit firmly Check fuse or breaker Replace fuse/reset breaker
Loss of suction	Obstruction in hose or wand tool Coated HEPA filter cover	Clean obstruction Replace HEPA filter
	Cleaning noggle not in place	Screw noggle cover into top of lid
	Hole/split in hose Micro Prefilter is saturated Unit tipped over	Inspect and replace hose Dispose of filter properly Put unit in upright position
	Vacuuming large quantities of fine material	Use Micro Prefilter Bag #13141 Refer to Accessories Page 7
Filters get wet	Drain cap not sealed O-ring on drain cap not in place Debris not emptied from tank before use	Tighten drain cap Replace o-ring Empty tank and intermediate cover of waste
	Unit blows dust	HEPA filters not in place Hole in filter Micro Prefilter not in place

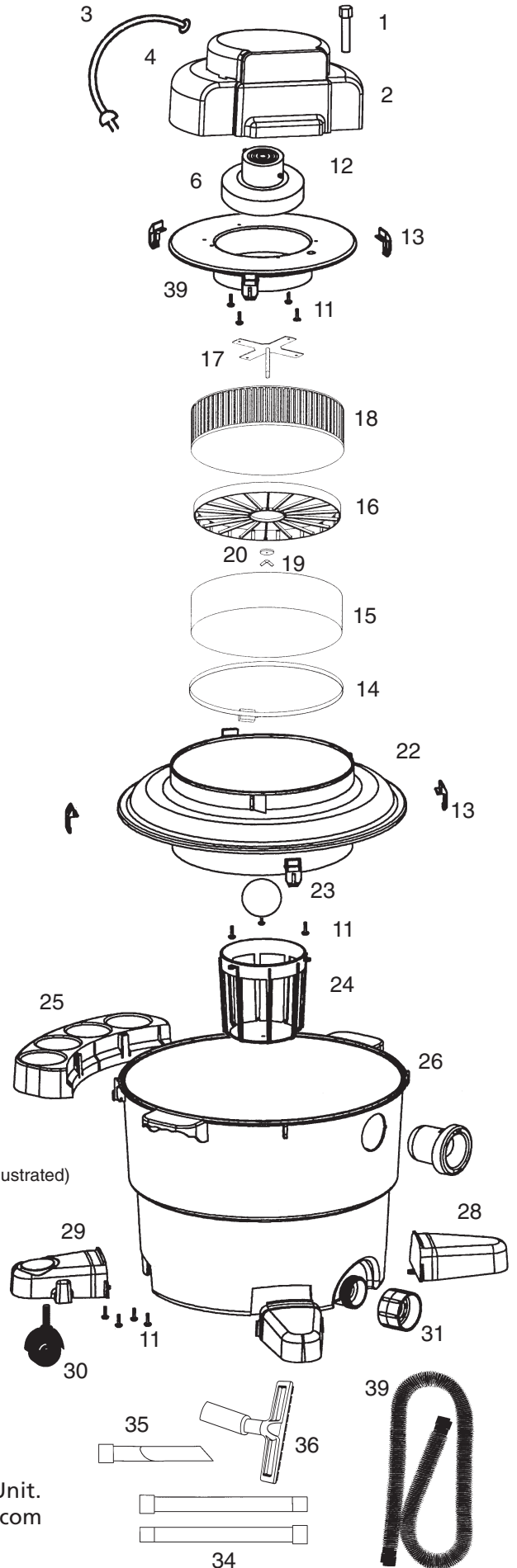
ACCESSORIES AVAILABLE

(not to scale)



Parts List

Key	Part No.	Qty.	Description
1	04503	1	Noggle Cover
2	11112	1	Motor cover
3	11431	1	Electric Cord
4	91423	1	On/Off switch
6	11301	1	W/D Motor
7	91183	1	Motor Bracket / Clip
9	91333	1	Pink Connector
10	91513	2	Hex Head Screws
12	11121	1	W/D Lid
13	11221	3	Lid Clips
14	93141	1	Hose Clamp (12")
15	13301	1	HEPA Filter Cover
16	13311	1	HEPA Filter Cover Support
17	13200	1	Cross Piece & Stem
11	91523	4	Black Pan Head Screws
18	13201	1	HEPA Filter
19	91522	1	Rubber Washer
20	94521	1	Wing Nut
22	15101	1	Intermediate Cover
13	11221	4	Lid Clamps
23	15121	1	Float Ball
11	91523	3	Black Pan Head Screws
24	15111	1	Float Ball Basket
25	12501	1	Tool Tray
26	12101	1	Tank
27	12111	1	Tank Intake Port
28	12301	2	Front Legs (smooth)
29	12311	2	Back Legs (w/hooks)
11	91523	4	Black Pan Head Screws
30	12321	4	Casters
31	12121	1	Drain Cap
32	12131	1	Drain Cap O-Ring
34	14131	2	Extension Wands
35	14121	1	Crevice Tool
36	14110	1	W/D Floor Tool
37	18506	1	HEPA Owner's Manual (not illustrated)
38	18511	1	Warranty Card (not illustrated)
39	14251	1	12' Hose



Service

To obtain approved Dustless service and parts, call: 1-800-568-3949.
 Please reference: Part Number, Description, Model Number, Name of Unit.
 Phone (435) 637-5885 • Fax (435) 637-5895 • www.dustlesstechnologies.com

Rev. 4-1-10